

EXISTING FLOOR ELECTRICAL SERVICES WITHIN THIS AREA ARE TO BE REMOVED.

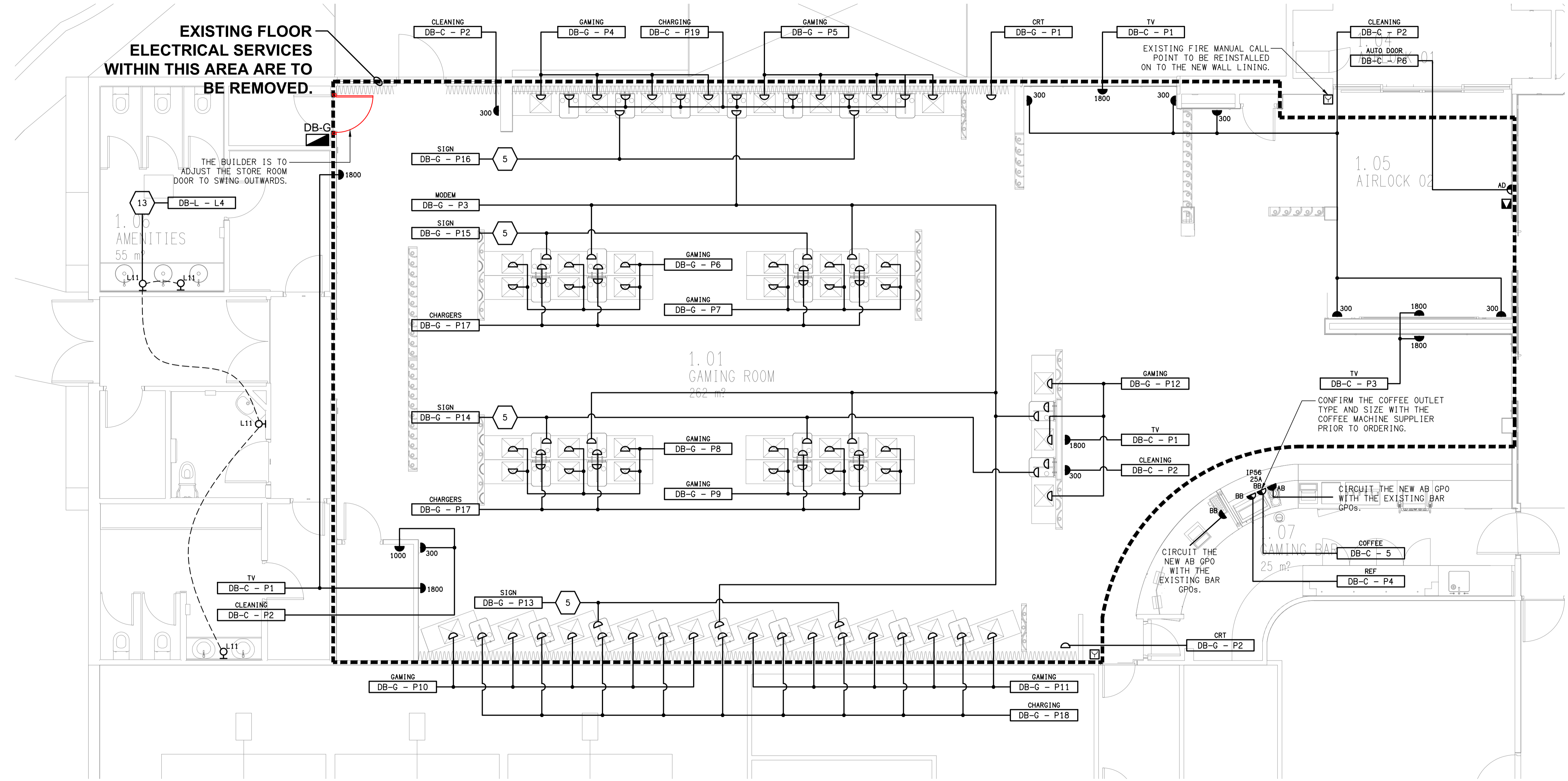
THE BUILDER IS TO ADJUST THE STORE ROOM DOOR TO SWING OUTWARDS.

EXISTING FIRE MANUAL CALL POINT TO BE REINSTALLED ON TO THE NEW WALL LINING.

CONFIRM THE COFFEE OUTLET TYPE AND SIZE WITH THE COFFEE MACHINE SUPPLIER PRIOR TO ORDERING.

CIRCUIT THE NEW AB GPO WITH THE EXISTING BAR GPOs.

CIRCUIT THE NEW AB GPO WITH THE EXISTING BAR GPOs.



ELECTRICAL DESIGN GROUP BRISBANE PTY LTD
ACN 092 710 793
TRADING AS:
ELECTRICAL DESIGN GROUP

THE COPYRIGHT OF THIS DRAWING REMAINS THE PROPERTY OF THE ELECTRICAL DESIGN GROUP.
USE FIGURED DIMENSIONS IN PREFERENCE TO SCALE.
ALL DIMENSIONS TO BE VERIFIED ONSITE.

ELECTRICAL DESIGN GROUP
ELECTRICAL BUILDING SERVICES CONSULTANTS
BRISBANE GOLD COAST

P.O. Box 15, Sherwood Q.4075
Phone: (07) 3278 4375
Email: brisbane@edg.net.au
Web: www.edg.net.au

PROJECT:
KALLANGUR TAVERN

1517 ANZAC AVENUE, KALLANGUR

C	CONSTRUCTION	12/05/2026
REV:	DESCRIPTION:	DATE:

DRAWING:
**ELECTRICAL SERVICES
GAMING ROOM & BAR FLOOR PLAN**

SCALE: 1:50	AT A1	PROJECT NO: C3648a	DRAWING NO: E04	REVISION: C
----------------	-------	------------------------------	---------------------------	-----------------------